

CelestixEdge E and VE Series

CelestixEdge E and VE Series bring the power of the Microsoft® Cloud OS into your datacenter and tightly integrate with the Microsoft and Amazon® cloud platforms. Our dedicated hardware and management software extends the best of Microsoft's battle-tested Cloud OS software, based on Windows Server® 2012 R2, into a rapidly deployed, secure platform.

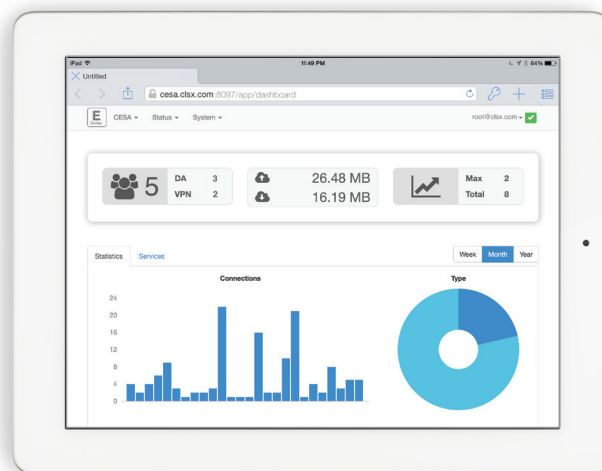
CelestixEdge Series manages the Windows Server 2012 R2 Remote Access platform from a proprietary simplified web interface – Comet. Comet delivers functionality like centralized configuration, enhanced reporting, and remote monitoring to simplify Windows Server 2012 R2 Remote Access deployments.

Comet Management Interface

- One click to install a major service (ADFS/Device Registration Service, NPS, DirectAccess/ VPN, Web Application Proxy, Remote Desktop Gateway, Remote Desktop Web, Work Folders)
- Quick access to service status and client usage information
- Enhanced reporting for monitoring and compliance requirements
- Efficient troubleshooting for DirectAccess client connections
- Streamlined connection to Remote Access advanced management

Enhanced and Mobile-Friendly Management Interface

The Comet web-based management console has been written using HTML5, making it cross-platform friendly and enabling remote management using any browser on any device. It provides administrators with a highly intuitive and easy-to-navigate management interface that will streamline configuration and management.



New Remote Access Dashboard

The main dashboard features at-a-glance system information and vital statistics, such as appliance version, current memory utilization, system uptime, and more. You can also quickly and easily shutdown or restart the appliance right from the main screen. Links on the dashboard provide instant access to appliance configuration, system settings, and status information. Convenient drop-down menus provide easy navigation from anywhere in the Comet interface.

Remote Access 'Kill Switch'

The Remote Access Dashboard has been updated to provide an instant view of current DirectAccess and VPN connections. The 'kill switch' feature allows an administrator to proactively terminate a remote access session at any time. This feature includes the following options:

03/25/2015 17:15:49 CLXWIN8-PCS DirectAccess

Details			
AuthMethod	Machine Kerberos & User Kerberos	ClientExternalAddress	
ClientIPv6Address	2002:b817:9c87:1000:f595:68fb:1bef:8889	ClientIPv4Address	0.0.0.0
ConnectionType	DirectAccess	ConnectionDuration	976
HostName	CLXWIN8-PCS	ConnectionStartTime	03/25/2015 17:15:49
Protocol	IPHttps	HealthStatus	Not Applicable
TotalBytesIn	8616	PSComputerName	
TransitionTechnology	IPHttps	SessionId	27114
UserName		TotalBytesOut	8888
		TunnelType	Esp

Connections (6)

Reset Connection
Disable
Remove

Reset Connection – A connection can be reset at any time, forcing the connected client to reestablish the connection. This is useful in troubleshooting scenarios.

Disable Connection – When a connection is disabled, the client's computer account in Active Directory is disabled at the same time, preventing the client from reestablishing a connection. This is useful for scenarios in which a client has become infected with malware. Once the client has been remediated, the Active Directory account can be enabled and the client can reestablish remote network connectivity.

Remove Connection – When a connection is removed, the client's computer account in Active Directory is deleted, permanently preventing the client from establishing a connection. This is useful for scenarios in which a client is lost, stolen or compromised.

CelestixEdge E and VE Series

The CelestixEdge E and VE Series provide secure access to on-premises as well as private, public and hybrid cloud environments. Both versions support traditional VPN, DirectAccess, web application proxy, Remote Desktop Gateway, site-to-site VPN, as well as Hyper-V Virtual Network Gateway from a single command center. Ultimately, this empowers IT administrators to efficiently handle datacenter and cloud workloads, while supporting employees with transparent connections from any location and from any device.

CelestixEdge Series Highlights

- Windows Server 2012 R2 based appliance
- Removes the complexity of tying together diverse connectivity options through our easy setup
- Unified Remote Access:
 - DirectAccess provides secure always-on connectivity for Windows 7/8/8.1 Enterprise clients
 - VPN: Traditional cross-platform VPN for Windows, Android™, Mac OS X®, and iOS access
 - Integrates with HOTPin® multi-factor authentication
- Remote Desktop Gateway for full remote desktop connectivity
- Remote Access Dashboard
- Enhanced reporting
- DirectAccess client diagnostics and Client Management
- Alerting and Monitoring
- Web Application Proxy for secure on-premises web site access and identify federation
- Work Folders enable your users to sync their work files from a corporate server to supported devices
- Hybrid Cloud connectivity between private and public clouds:
 - Hyper-V Network Virtualization Gateway for seamless movement of workloads
 - Site-to-Site VPN access between private and public clouds, or multi-clouds
 - Redundant multi-cloud connectivity, including Microsoft Azure and Amazon Web Services

E Series



Model	E3400	E6400	E8400
Recommended users*	below 500 concurrent users	500 to 3,000 concurrent users	up to 5,000 concurrent users
Form factor	1U	1U	2U
CPU	Intel i5	Intel E3	2 x Intel E5
Number of processors	4 Cores	4 Cores	12 cores (hyperthreading)
Memory	8 GB	16 GB	16 GB
Hard drive	SATA-II 320 GB available storage	SATA-II 120 GB available storage 2 x 160 GB hot-swappable hard drive	SATA-III SSDs 300 GB available storage 4 x 160 GB hot-swappable hard drive
Hot-swappable fans	-	-	■
Power supply	220W auto-switching universal 110/220V AC power supply	Redundant hot-swappable power supply – 2 x 250W	Redundant hot-swappable power supply – 2 x 500W
Disk mirror RAID	-	RAID 1	RAID 10
Gigabit ethernet ports	6	6	8
Dimensions (H x W x L)	1.75" x 17.3" x 13.0"	1.75" x 17.3" x 21.5"	3.5" x 17.4" x 23.25"

Order Number	E3400	E6400	E8400
Appliance	EA2-22210-014	EA2-22215-014	EA2-22218-014
1 Year 8x5 Support	EFS-22210-100	EFS-22215-100	EFS-22218-100
3 Year 8x5 Support	EFS-22210-300	EFS-22215-300	EFS-22218-300
1 Year 24x7 Support	TFS-22210-100	TFS-22215-100	TFS-22218-100
3 Year 24x7 Support	TFS-22210-300	TFS-22215-300	TFS-22218-300

VE Series

Model	VE3400	VE6400	VE8400
CPU	4 Core	4 Core	8 Core
Number of processors	4 Cores	4 Cores	12 cores (hyperthreading)
Memory	8 GB	16 GB	32 GB

Order Number	VE3400	VE6400	VE8400
Appliance	EA2-24210-014	EA2-24215-014	EA2-24218-014
1 Year 8x5 Support	EFS-24210-100	EFS-24215-100	EFS-24218-100
3 Year 8x5 Support	EFS-24210-300	EFS-24215-300	EFS-24218-300
1 Year 24x7 Support	TFS-24210-100	TFS-24215-100	TFS-24218-100
3 Year 24x7 Support	TFS-24210-300	TFS-24215-300	TFS-24218-300